



Universal Loader
FL 500

*The multitalent
For all tractors or electro motor drive*

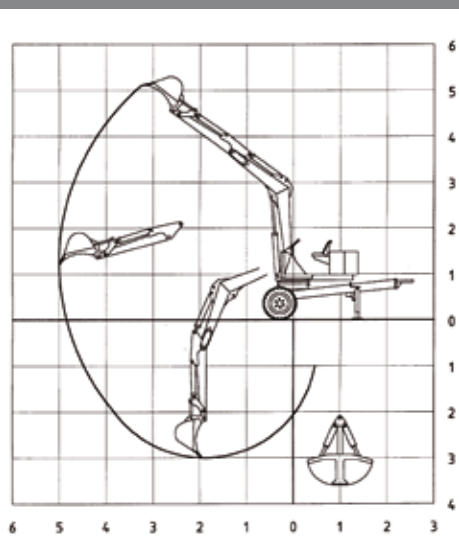


Schlingenerstraße 2a ▪ D-87668 Rieden ▪ Tel.: +49 8346 982026
E-Mail: info@ostler-maschinenbau.com ▪ www.ostler-maschinenbau.com

Technical Data

Maximum range of backhoe bucket	5,150 mm
Maximum range of load hook	4,300 mm
Max. operational depth of backhoe bucket	3,000 mm
Max. operational depth of earth bucket	3,500 mm
Max. operational height of load hook	4,500 mm
Lifting capacity without appliance	820-1,370 kg
Diameter of turntable	700 mm
Speed of power take-off shaft	540 U/min.
Slewing range	endless
Wheel gauge	1,800 mm
Overall width	2,030 mm
Tyres	10,0/75-15,3 impl. ply
Support alternatively	hydraulic/mechanical
Dead weight incl. concrete ballast (without appliance)	2,300 kg

*Dimensions are not binding. Changes in design may be subject to alterations.



Special Equipment

- Dung bucket
- Earth bucket
- Timber bucket
- Rotation servo, hydraulic
- Backhoe bucket 30 to 60 cm
- Ditch bucket 100/125 cm
- Slewing device for ditch bucket
- Hydraulic support
- 2-lever (Euro) control
- Comfort control with safety bar
- Electro motor
- Oil flow meter

Standard Equipment

- Hydr. control valve (fourfold), hand lever
- Seat and control system laterally arranged
- Covering of tube acc. to CE standards
- Tyres 10,0/75-15,3 impl. ply
- Concrete ballast



In-house development and production according to CE standards



The powerpack

Universal Loader **FL 700**

*Standard heavy duty slew transmission
High lifting capacity due to tandem main arm cylinder*

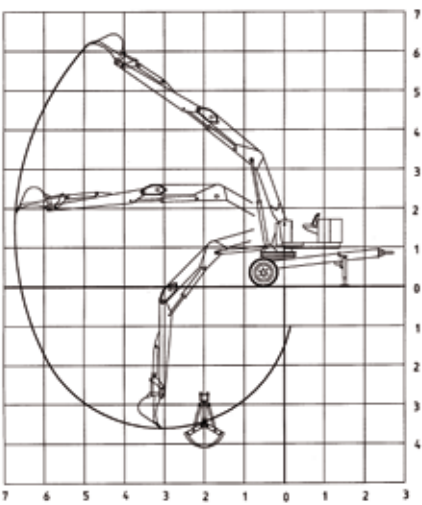


Schlingenerstraße 2a ▪ D-87668 Rieden ▪ Tel.: +49 8346 982026
E-Mail: info@ostler-maschinenbau.com ▪ www.ostler-maschinenbau.com

Technical Data

Maximum range of backhoe bucket	6,850 mm
Maximum range of load hook	6,000 mm
Max. operational depth of backhoe bucket	3,600 mm
Max. operational depth of earth bucket	4,000 mm
Max. operational height of load hook	5,800 mm
Lifting capacity without appliance	1,700-3,800 kg
Diameter of turntable	880 mm
Speed of power take-off shaft	540 U/min.
Slewing range	endless
Torque	1,800 Nm
Wheel gauge	1,800 mm
Overall width	2,030 mm
Tyres	11,5/15 impl. 10 ply
Support alternatively	hydraulic/mechanical
Dead weight incl. concrete ballast (without appliance)	2,900 kg

*Dimensions are not binding. Changes in design may be subject to alterations.



Special Equipment

- Dung bucket
- Earth bucket
- Timber bucket
- Rotation servo, hydraulic
- Backhoe bucket 30 to 60 cm
- Ditch bucket 100/125/150 cm
- Slewing device for ditch bucket
- Hydraulic support
- 2-lever (Euro) control
- Comfort control with safety bar
- Electro motor
- Oil flow meter

Standard Equipment

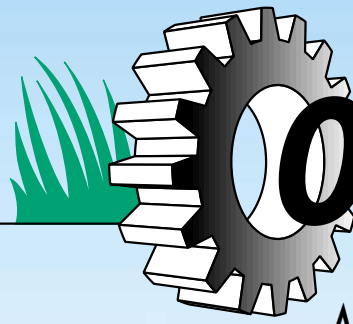
- Control valve in sandwich design
- Seat and control system laterally arranged
- Covering of tube acc. to CE standards
- Tyres 11.5/15 impl. 10 ply
- Concrete ballast



In-house development and production according to CE standards



Hydraulic Loader HL 150



OSTLER
Richard Ostler
Maschinenbau GmbH

***Supreme technology
with modern
comforts!***



- ***Optimum geometry of crane due to toggle lever technology***

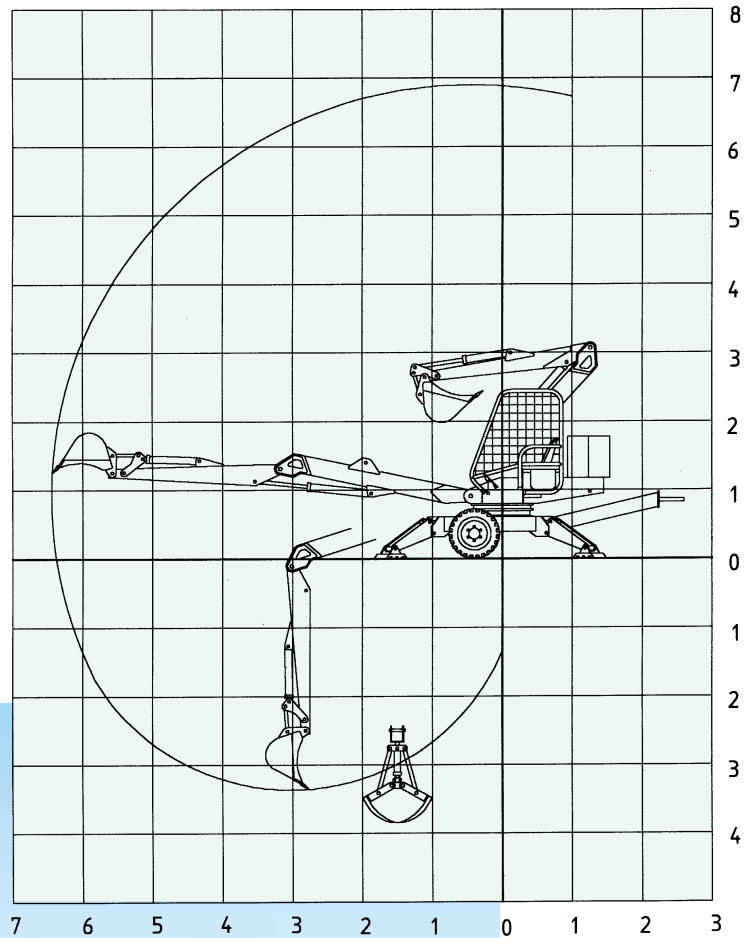
***Universal usage for dipper shovel and excavator operation,
loading of timber and dung, communal and recycling purposes***


Technical Data:

HL 150

Dead weight incl. concrete ballast (without appliance)	3,430 kg
Lifting capacity without appliance	1,150-2,900 kg
Working pressure	170 bar
Slewing range	endless
Maximum range of dipper shovel	6,500 mm
Maximum operational depth of dipper shovel	3,300 mm
Maximum operational depth of earth scoop	4,000 mm
Speed of power take-off shaft	540 revs/min
Overall width	2,030 mm
Wheel gauge	1,800 mm
Tyres	11.5 / 15 impl. 10 ply
Support	hydraulic

Dimensions are not binding. Changes in design may be subject to alterations.



 In-house development and production according to CE standards



HL 150

Standard Equipment:

- CE safety driver's cabine
- Hydraulic support
- 2 hydraulic fast locking couplings (articulated arm)
- 2-lever comfort control

Special Equipment:

- Electromotor 7.5 kw
- Double pump (2-circle arrangement)
- High capacity clam
- Earth scoop with two cylinders
- Weather protecting hood

Richard Ostler Maschinenbau GmbH · Schlingener Str. 2a · D-87668 Rieden b. Kaufbeuren

Phone: +49 (0) 83 46/98 20 26 · Telefax: +49 (0) 83 46/98 20 27

e-mail: info@ostler-maschinen.de · www.ostler-maschinen.de

Dung Distributor **K•L•E**



Technical Data

	DS 6 E	DS 9 E	DS 9T(Tandem)
Permissible laden weight	6,000 kg	8,000 kg	10,000 kg
Empty weight	2,300 kg	2,500 kg	3,000 kg
Size of platform (mm)	4,500 x 1,800	4,700 mm x 2,000 mm	
All-steel bottom	x	x	x
Platform gates	600mm	600 + 400 mm	
Capacity	approx. 5 m ³	approx. 9 m ³	
Front protection gate	x	x	x
Wheel gauge	1,700 mm	1,800 mm	
Overrunning brake with reverse gear automatism	x	x	—
Compressed-air brake system	—	—	x
Outlet of distribution unit	1,000 mm	approx. 1,200 mm	
Spiral distribution unit 4 vertical rollers	x	x	x
Hydraulic distribution roller protection	x	x	x

x = standard equipment

Oil bath drive of distribution unit
Hydraulic scraper floor drive
Forward and reverse motion of scraper floor
Scraper floor
Manganese steel scraper floor chains 12mmØ
Electric illumination
Tyres
Resilient tandem undercarriage (Boggi)
Driven by means of universal joint shaft/universal joint shaft for wide angles including safety clutch

	DS 6 E	DS 9 E	DS 9T(Tandem)
Oil bath drive of distribution unit	4	4	4
Hydraulic scraper floor drive	x	x	x
Forward and reverse motion of scraper floor	x	x	x
Scraper floor	2 chains	4 separate chains	
Manganese steel scraper floor chains 12mmØ	x	x	x
Electric illumination	x	x	x
Tyres	19.0/45 x17	500/50 x17	19/45 x17
Resilient tandem undercarriage (Boggi)	—	—	x
Driven by means of universal joint shaft/universal joint shaft for wide angles including safety clutch	x	x	x

In-house development and production according to CE standards



Richard Ostler Maschinenbau GmbH

Schlingener Straße 2a
D-87668 Rieden bei Kaufbeuren

Telephone: +49 (0) 8346/98 20 26

Telefax: +49 (0) 8346/98 20 27

e-mail: info@ostler-maschinen.de

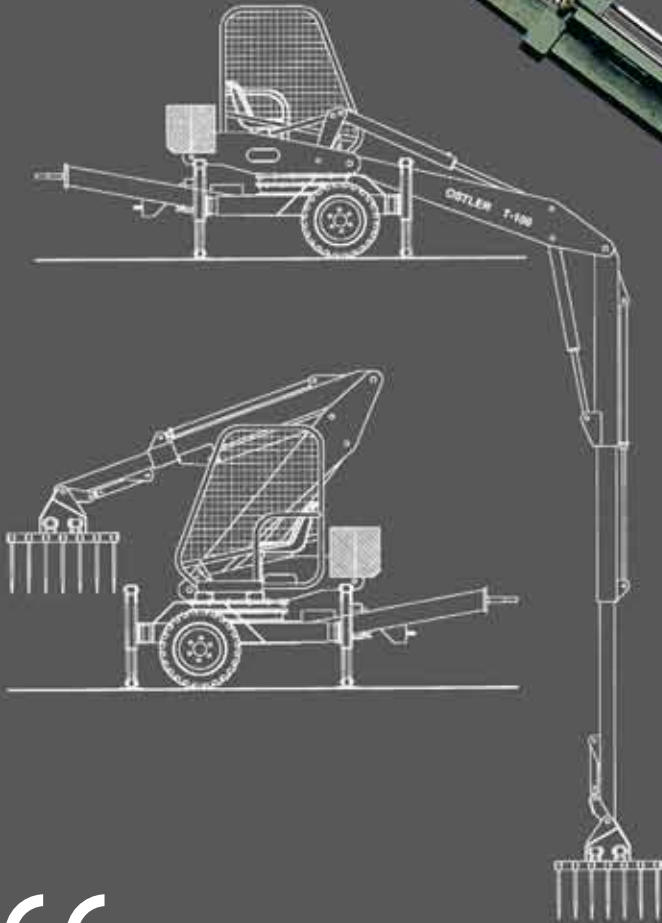
www.ostler-maschinen.de



Telescopic Loader

T 100

*Main arm slewable to the back
For work carried out with confined space
Technical advantage due to row-link system*



In-house development and production
according to CE standards



Schlingenerstraße 2a ▪ D-87668 Rieden ▪ Tel.: +49 8346 982026
E-Mail: info@ostler-maschinenbau.com ▪ www.ostler-maschinenbau.com

Technical Data

	T 100
Maximum range of hay clam	9200 mm
Maximum range of load hook	8200 mm
Maximum operational depth of hay clam	6500 mm
Height in transport position	2950 mm
Lifting capacity without appliance	300-2400 kg
Diameter of turntable	880 mm
Speed of power take-off shaft	540 revs/min.
Slewing range	endless
Wheel gauge	1800 mm
Overall width	2100 mm
Tyres	10,0/75 -15,3
Support alternatively	hydraulic/mechanical
Dead weight incl. concrete ballast	3200 kg

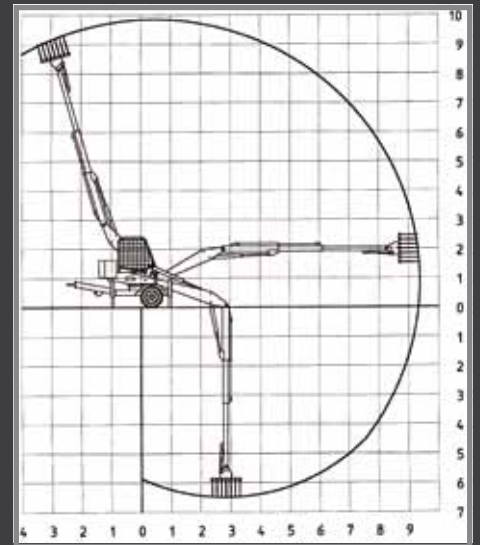
Dimensions are not binding.
Changes in design may be subject to alterations.

*Multimobile
extreme mobility!*



Standard Equipment

- Hay clam 1600, 2 x 7 tines
- Electromotor 5.5 kw
- 2-lever (EURO) control
- Load support valves
- Safety driver's cabine
- Fourfold mechanical support
- High position of clam
- Concrete ballast



Special Equipment

- Hay clam 2000, 2 x 6 tines
- Hydraulic drive
- Earth scoop
- Hydraulic support
- Hour meter

T100



In-house development and production
according to CE standards

TOOLS



Hydraulic rotation servo,
endlessly slewable



In-house development and production
according to CE standards

Earth scoop with two cylinders for
heavy earthwork

We tackle it!



High capacity clam (opening width: 1,600 mm)



Chain drive for removal from deep silos



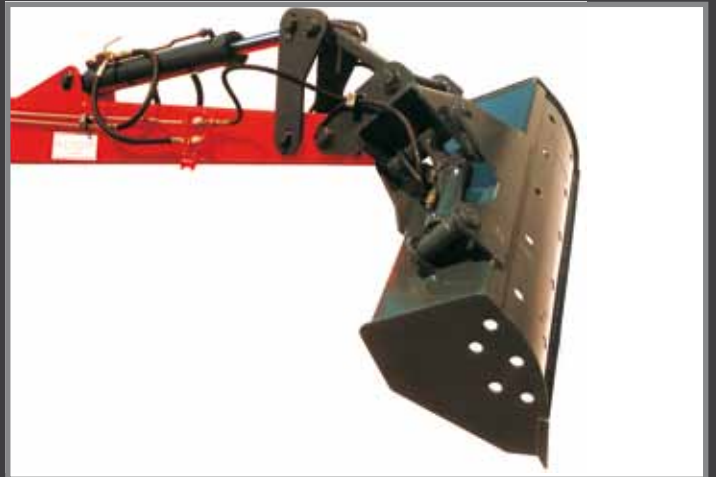
Timber clam (opening of clam: 1,290 mm)



More tools – also custom-built tools – on demand!



Dipper shovel with tine protection for leveling out and safe drainage



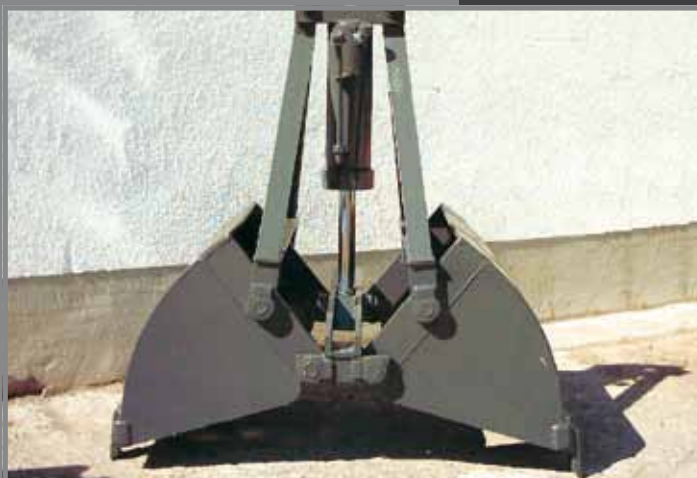
Sleivable ditch shovel, 2 x 45°



Dipper shovel with automatic control system for heavy soil



Dipper shovel for extraction of rootstocks, removal of stones from humus



Earth scoop with working cylinder



Dung clam, 2 x 6 tines with working cylinder



In-house development and production according to CE standards

We still supply you with tools for KRÜGER machines. Please contact us!

Hydraulic Excavators

DP 4
DP 5

Top technology!
Top effect!



In-house development and production
according to CE standards



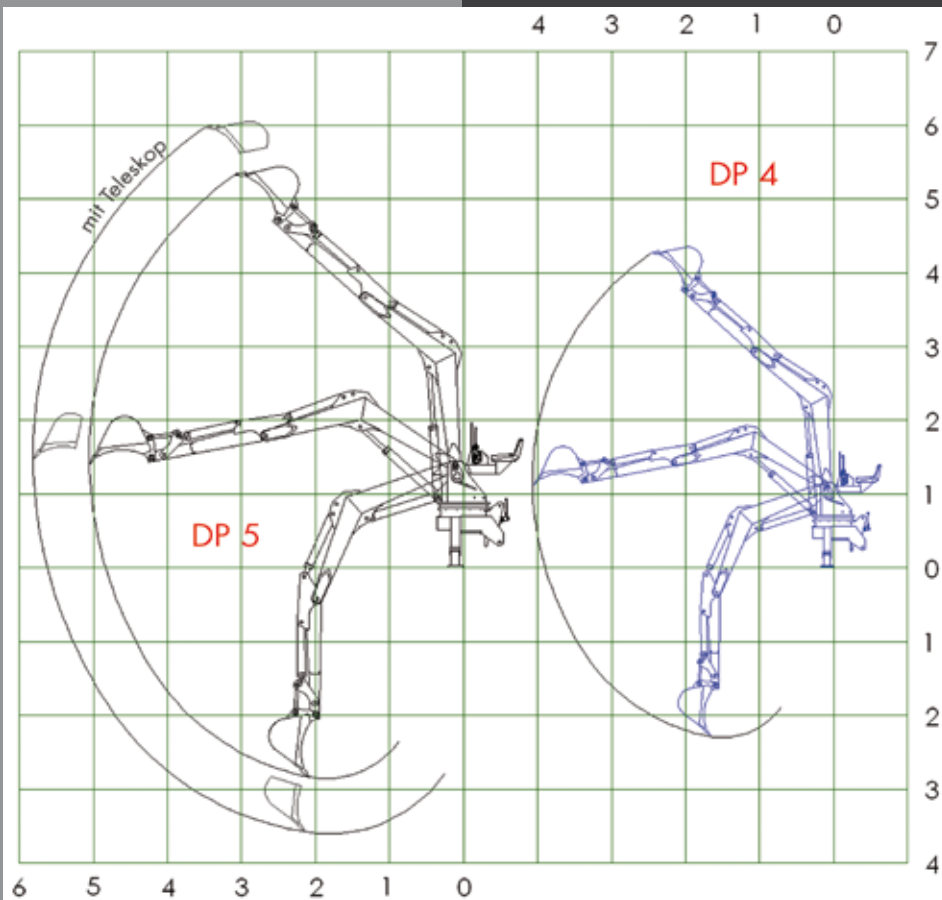
Schlingenerstraße 2a ▪ D-87668 Rieden ▪ Tel.: +49 8346 982026
E-Mail: info@ostler-maschinenbau.com ▪ www.ostler-maschinenbau.com

Technical Data

	DP 4	DP 5
Maximum range	4,000 mm	5,000 mm
Maximum discharge height	4,300 mm	5,000 mm
Maximum operational depth of dipper shovel	2,200 mm	3,000 mm
Maximum operational depth of earth scoop	2,600 mm	3,250 mm
Overall width	1,900 mm	1,900 mm
Diameter of turntable	500 mm	700 mm
Torque	1,020 Nm	1,620 Nm
Slewing range	endless	endless
Unladen weight without tools	700 kg	950 kg
Lifting capacity without tools	500-950 kg	900-1,430 kg
Speed of power take-off shaft	540 revs/min.	540 rev/min.
Necessary tractor minimum	50 cont. hp.	90 cont. hp.

Dimensions are not binding.
Changes in design may be subject to alterations.

Universal use for excavator operation, loading of timber and dung as well as communal and recycling purposes!



*Optimum CAD-developed kinematics!
Cone shaped dipper shovel for better discharge of bulk material!*

Standard equipment

- Control valve for hydraulic locking
- Endless slewing range
- Three-point linkage, category 2
- Rigid mounting of hydraulic pump
- Oil tank with return filter and inspection glass
- Heavy duty slew transmission 1:5



Special equipment

- Hydraulic support, separately controllable
- Hydraulic locking system
- 2-lever (EURO) control
- Dung clam, earth scoop
- Timber clam with rotation servo
- Dipper shovel and ditch shovel



Universal Loader K3



Technical Data

Engine, **Euro Stage III**: Kubota, 4-cyl. diesel engine, water cooled, 36kW (50 HP), 2800rpm

Engine, **Euro Stage V**: Kubota, 4-cyl. petrol engine, water cooled, 43kW (58 HP), 3600rpm

Lifting capacity: 1400 kg standard, 1600 kg with lifting cylinders Ø 115mm and counter weights (max. 300 kg)

Lifting height: 3300 mm, lower side of pallet fork

Tipping load: 1500 kg, straight in-line, telescope retracted

Front axle: Telescopic front axle, width 1240 - 1870 mm

Rear axle: Standardly stiff, optionally pendulous

Front loader: Hydraulic telescopic lift mast, max. height 3.3 m

Drive: All-wheel, hydrostatic drive at each wheel, 0-18 km/h

Driving hydraulic: Adjustable axial piston pump, 400 bars, 4 fully hydraulic wheel motors in direct drive

Working hydraulics: Gear type pump, 180 bars, 64 l/min (diesel) 83l/min (petrol)

Service brake: By hydrostatic drive, on all wheels

Parking brake: Spring loaded brake, rear

Tyres: Standard 10.0/75 – 15.3AS, total width 1.24 – 1.87 m
Optionally 31 x 15.50-15 tot. loader width 1.40 - 2.03 m

Driver seat: Comfort seat with integrated contact switch, safety belt

Steering column: Comfort steering column, inclination adjustable, with operating hours counter, fuel gauge

Tool carrier: EURO-Norm with mechanical Locking

Fuel/Oil Tanks: Integrated safety tanks, fuel 29 litre, hydraulic oil 60 litre

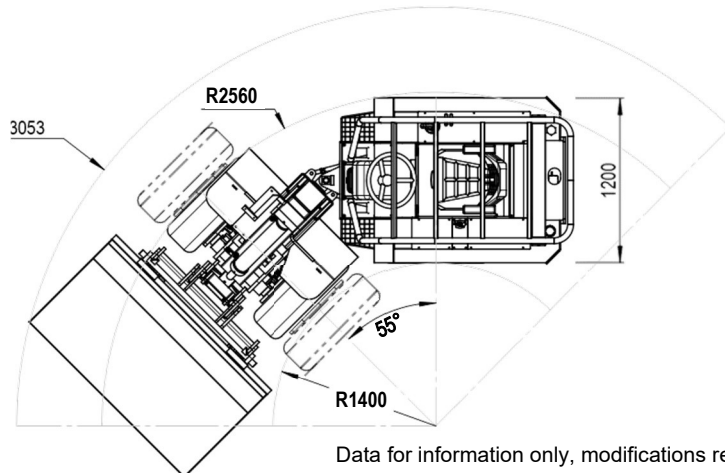
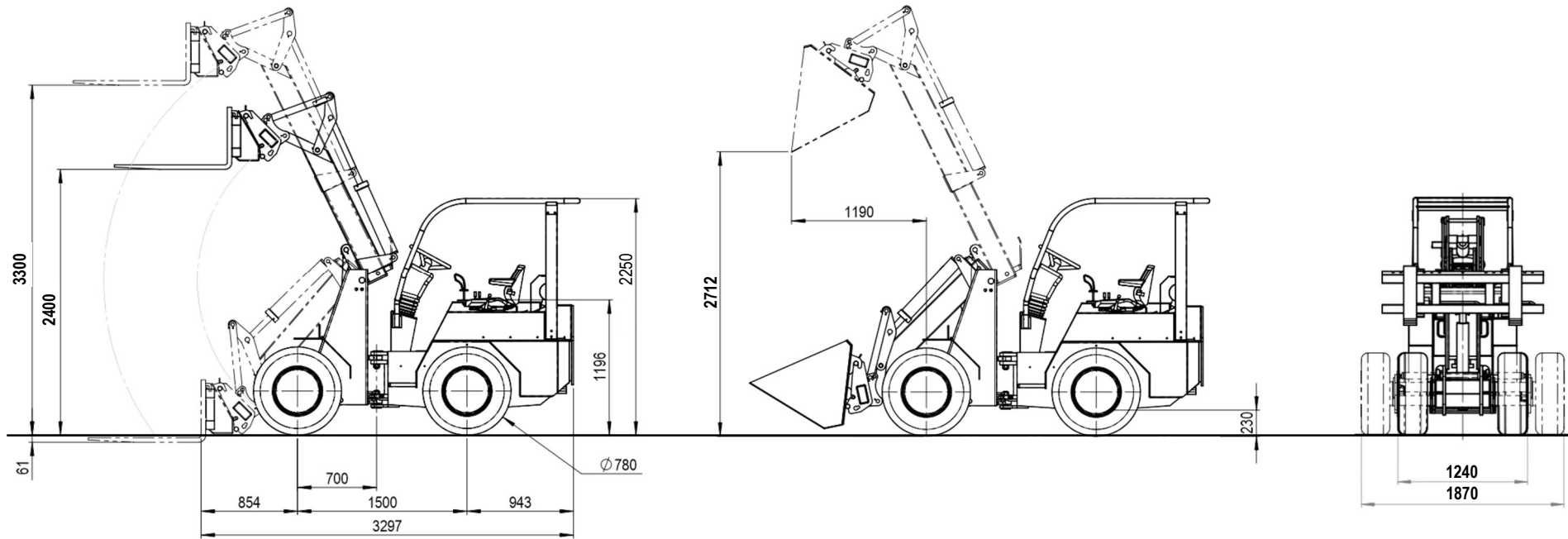
Empty weight: 2280 kg (front-/ rear axle 690 / 1590 kg)

Turning radius: Inside 1400 mm, outside 2560 mm, articulating angle 55°



Data for information only, modifications reserved, V 2.3

Universal Loader K3



Data for information only, modifications reserved, V2.3

- Short wheelbase of only 1.50 m
- Narrow chassis of only 1.24 m
- Track width, telescopic from 1.24 to 1.87 m
- Low height of only 2.25 m
- Tight turning radius outside of only 2.56 m
- High lifting height up to 3.30 m
- High lifting capacity up to 1.6 to
- **Optimal composition of compactness, manoeuvrability, large workspace and high lifting capacity**

Universal Loader K2 P



Technical Data

Engine, **Euro Stage V**: Kubota, 4-cyl. diesel engine, water cooled, 18.5 kW/25HP, 2300rpm

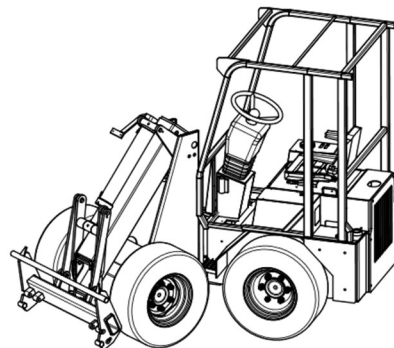
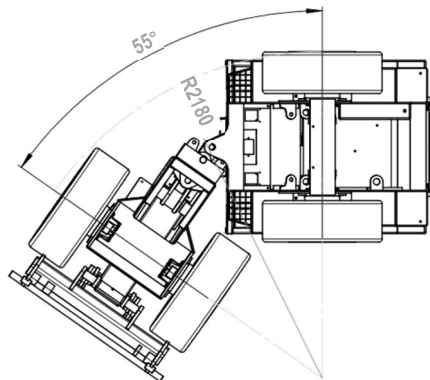
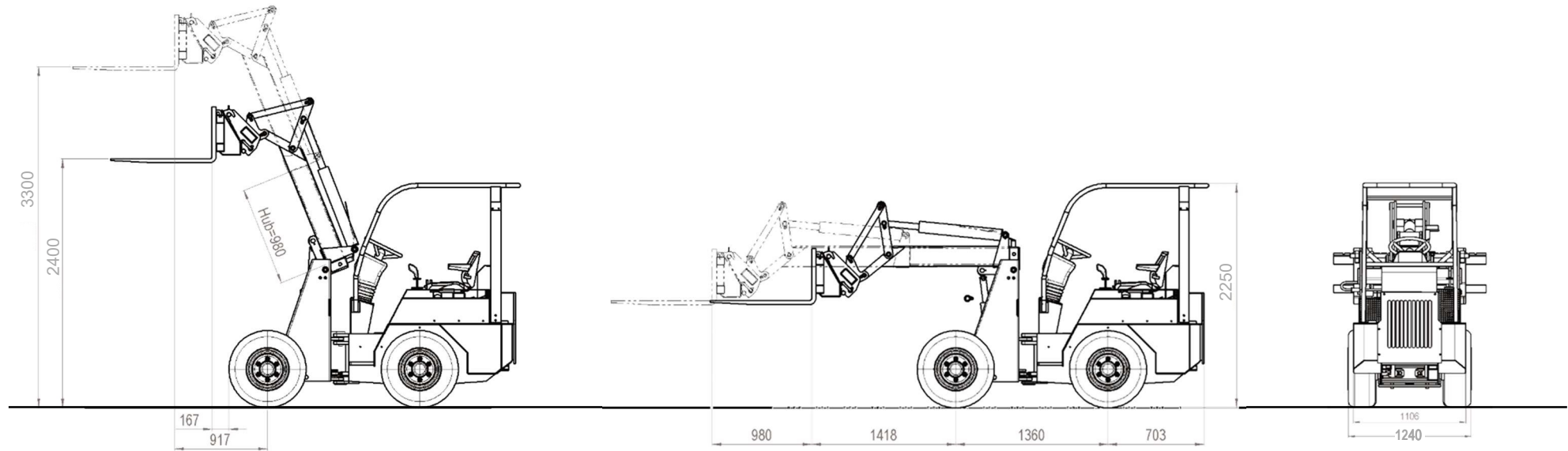
Engine, **Euro Stage V**: Kubota, 4-cyl. petrol engine, water cooled, 43 kW/58HP, 3600rpm

Lifting capacity:	1200 kg standard
Lifting height:	3300 mm, lower side pallet fork
Tipping load:	1300 kg, straight in-line, telescope retracted
Front axle:	Stiff, optionally telescopic, width 1240-1837 mm
Rear axle:	Pendulous rear axle
Front loader:	Hydraulic telescopic lift mast, max. height 3.3 m
Drive:	All-wheel, hydrostatic drive at each wheel, 0-18 km/h
Driving hydraulic:	Adjustable axial piston pump 400 bars, 4 fully hydraulic wheel motors in direct drive
Working hydraulics:	diesel engine: gear pump 37 l/min, 180 bar petrol engine: gear pump 58 l/min, 180 bar
Service brake:	By hydrostatic drive, on all wheels
Parking brake:	Spring loaded brake, rear
Tyres:	Standard 10.0/75 – 15.3AS, tot. loader width 1.24 m
Driver seat:	Comfort seat with integrated contact switch, safety belt
Steering column:	Comfort steering column, inclination adjustable, with operating hours counter, fuel gauge
Tool carrier:	EURO-Norm with mech. locking
Fuel / oil tank	Integrated safety tanks, 20 l / 40 l
Empty weight:	2060 kg (front / rear axle 590 / 1470 kg)
Turn. radius outside:	Inside 1180 mm, outside 2180 mm, articulating angle 55°

Data for information only, modifications reserved, V 2.3



Universal Loader K2 P



- Short wheelbase of only 1.36 m
- Narrow chassis of only 1.24 m width
- Low height of only 2.25 m
- Tight turning radius outside of only 2.18 m
- High lifting height up to 3.30 m
- High lifting capacity up to 1.2 to
- **Optimal composition of compactness, manoeuvrability, large workspace and high lifting capacity**

Data for information only, modifications reserved, V2.3